

## OEM Application Profile

Builder: Wahl Construction

Owner: Cruz Marine LLC

Naval architects: A.G. McIlwain Ltd.

Vessel: 91' river & ocean tug

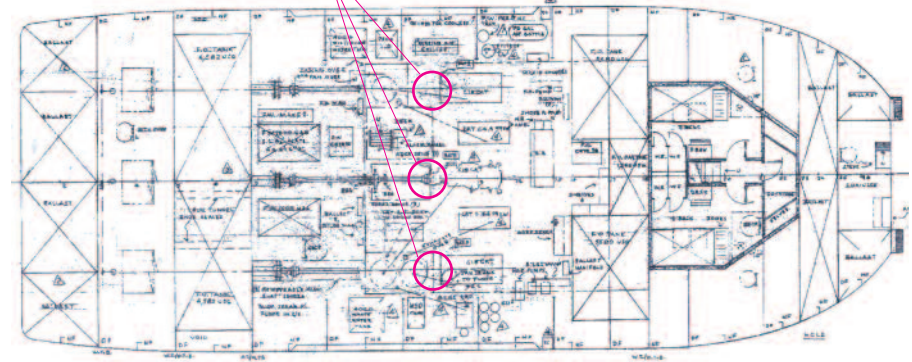
Application: Live-aboard, oil field supply vessel in Alaska rivers

Power: Three 600 HP CAT C18 diesel engines

Vibration control: Aquadrive HDL60.780 units installed on each drivetrain

The tug will be operating for long durations without stopping. Aquadrive CV joint and thrust bearing systems protect the transmission and engine from damaging shock loads and shaft misalignment. They dramatically reduce noise and vibration, reducing crew stress and fatigue.

Aquadrive



DISTRIBUTED BY

Marine Transmission Center

Powertrain division of Mack Boring & Parts Co.

[www.aquadriveusa.com](http://www.aquadriveusa.com)

800-709-0673