



5.7L V10

350- 425HP

Verado[®]

NOTHING ELSE COMES CLOSE

Mercury 5.7L V10 350-425hp Verado outboards prove you can have it all – speed, comfort, efficiency and reliability. Built for extreme endurance and engineered to dominate, V10 Verado redefines high-horsepower outboard performance, delivering an exceptional experience without compromise.

THE V10 DIFFERENCE

- 5.7L powerhead generates exceptional torque and muscle
- Easily the smoothest, quietest performance in class
- Quad-cam design delivers instant acceleration and speed
- Premium digital controls put you in complete command
- Efficiency-enhanced so you can explore and stay out longer
- Full performance on readily available 87-octane fuel

LEARN MORE AT MERCURYMARINE.COM/V10



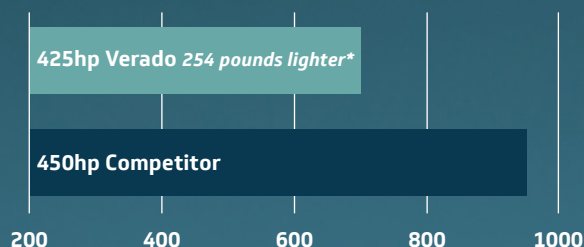
 **MERCURY**
GO BOLDLY.™

V10 VERADO: ZERO COMPROMISES

We've done the testing, and the numbers speak for themselves: V10 Verado stands alone.

LIGHTWEIGHT HEAVYWEIGHTS

WEIGHT (IN POUNDS)



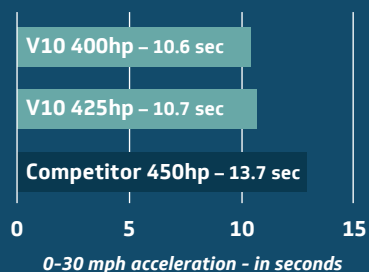
**Comparison based on 25-inch shaft models.*



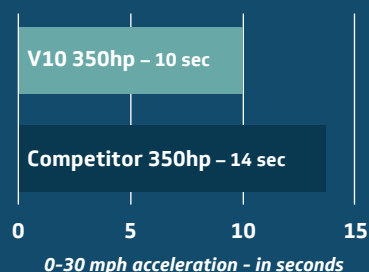
QUICK OUT OF THE HOLE

When running a big boat with a heavy load, the difference is clear. V10 Verado outboards get boats up and on plane faster than the competition*.

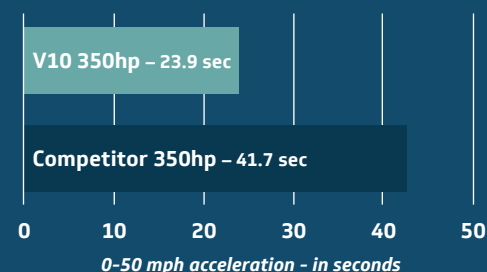
0-30 MPH ACCELERATION



0-30 MPH ACCELERATION



0-50 MPH ACCELERATION



**Tests boat: 26-foot, 5,000-pound center-console with a heavy load.*

QUIET THE NOISE

Mercury Verado outboards are easily the smoothest, quietest in their class – an exceptional boating experience all around.

425HP VERADO
22% QUIETER
AT CRUISE
SPEED THAN
A 450HP
COMPETITOR

350HP VERADO
40% QUIETER
AT CRUISE
SPEED THAN
A 350HP
COMPETITOR

Test conducted in Mercury Noise, Vibration, Harshness Technical Center.

ENHANCED MID-RANGE ACCELERATION

Tuned by Mercury performance experts, the 350hp Verado outboard features enhanced mid-range acceleration, adding an intense punch that helps you conquer swells and get to the adventure faster.

CLASS-LEADING CHARGING POWER

All V10 Verado outboards are outfitted with powerful 150-amp alternators capable of providing up to 4X the charging output at cruising speed compared to a 350hp competitor.

INTUITIVE, INNOVATIVE FEATURES

ADAPTIVE SPEED CONTROL

This always-on technology maintains engine rpm despite changes in load or conditions, making it easier to climb swells, maintain cruising speed and effortlessly carve out turns.

IDLE CHARGE BATTERY MANAGEMENT

Verado® backs you with confidence. If cranking battery voltage dips, the SmartCraft® operating system will automatically increase idle rpm to deliver a charging boost when you need it most.

DRIVE-BY-WIRE STEERING

Smooth, responsive Digital Throttle & Shift controls give you total command over your vessel. Available electric steering further enhances the experience, offering truly effortless handling.



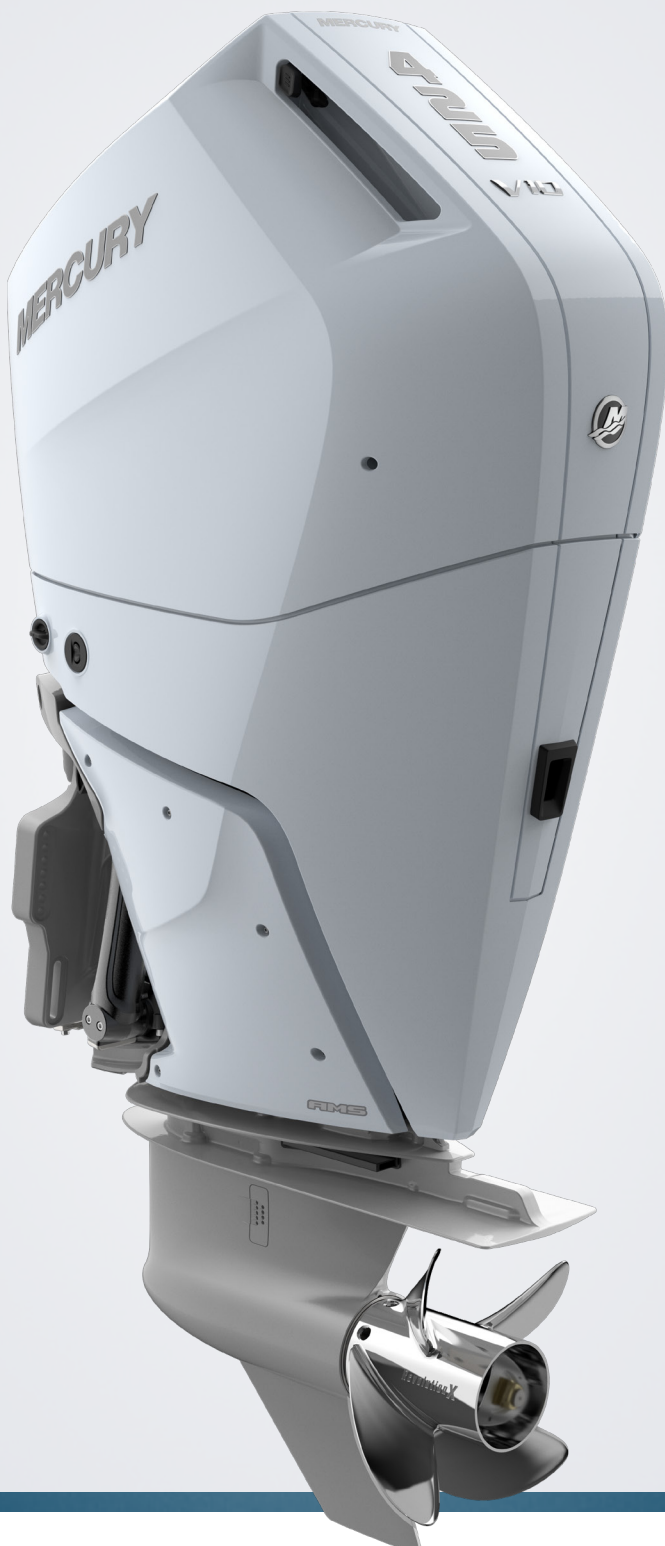
JOYSTICK PILOTING FOR OUTBOARDS (JPO)

Effortless docking, digital anchoring and precise movement in any direction – all at your fingertips.



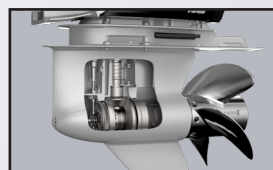
ADVANCED MIDSECTION (AMS)

AMS mounts cradle your engine, virtually eliminating vibration transfer to the boat.



ADVANCED SOUND CONTROL

Toggle between a whisper-quiet exhaust tone or a throatier growl at startup and idle.



PERFORMANCE GEARCASE

Advanced hydrodynamics and premium Revolution X™ props deliver outstanding efficiency, handling and hole shot.

PREMIUM STYLING

Choose from four finishes to harmonize with the look and style of leading premium boat brands. Or make it your own with a splash of color from available Accent Panel kits.



Pearl Fusion

Cold Fusion

Warm Fusion

Phantom Black

UNFLINCHING DURABILITY

Every Verado outboard is built to outlast the toughest conditions. They feature heavy-duty components, durable corrosion-preventive finishes and the intelligent Mercury Engine Guardian system, which monitors and protects your engine.



EFFORTLESS OWNERSHIP

We've made caring for your engine a breeze:

- Electronic oil sensing eliminates messy oil level checks
- The service door provides access without removing the cowl
- Color-coded touch points speed up routine checks
- Quickly clear out salt and debris using integrated engine flush hose

HORSEPOWER	350	400	425
WOT RPM	5800-6400	5800-6400	6000-6600
Engine Type	V10	V10	V10
Displacement	5.7L (349 CID)	5.7L (349 CID)	5.7L (349 CID)
Induction	Naturally aspirated, performance-tuned intake manifold	Naturally aspirated, performance-tuned intake manifold	Naturally aspirated, performance-tuned intake manifold
Starting	Electric start with SmartStart protection	Electric start with SmartStart protection	Electric start with SmartStart protection
Gear Ratio	2.08:1	2.08:1	2.08:1
Alternator	12V 150 amp (1890 watt)	12V 150 amp (1890 watt) 12V/48V Dual Mode (6000 watt) (optional)	12V 150 amp (1890 watt) 12V/48V Dual Mode (6000 watt) (optional)
Trim System	Power trim and tilt	Power trim and tilt	Power trim and tilt
Dry Weight*	695lbs (316kg)	695lbs (316kg)	695lbs (316kg)
Steering	Electro-hydraulic power steering Electric Steering (optional) JPO (optional)	Electro-hydraulic power steering Electric Steering (optional) JPO (optional)	Electro-hydraulic power steering Electric Steering (optional) JPO (optional)
Shaft Length	20 in (508mm) 25 in (635mm) 30 in (762mm)	20 in (508mm) 25 in (635mm) 30 in (762mm) 35 in (889mm)	20 in (508mm) 25 in (635mm) 30 in (762mm) 35 in (889mm)

*Dry weight: Lightest-version model, excludes engine oil, rigging, hardware.



WARRANTY | Mercury Verado outboards come with a standard three-year limited warranty and industry-leading three-year corrosion warranty.